



FTS, FTS-V

PIVOT WOODEN ROOF WINDOW

I. APPLICATION

| | |
|--|--|
| | Pivot window |
| | Installed in roofs with pitches 15-90° |

II. FEATURES

| | |
|--|-------------------------------|
| | Pinewood, natural colour |
| | V10 air inlet |
| | Double sealing system |
| | Universal installation system |
| | Steel spacer |
| | Handle Standard |

III. ADDITIONAL PRODUCTS USED WITH WINDOWS

| Flashings | |
|----------------------|--------------------------|
| | standard |
| | special |
| | combination |
| Control | |
| | manual |
| | electric |
| External accessories | |
| | awning blinds |
| | roller shutters |
| Internal accessories | |
| | standard roller shutters |
| | awning blinds |
| | pleated blinds |
| Other accessories | |
| | insect screen |

IV. OPTIONS

Standard type windows: FTS, FTS-V manufactured only in **standard versions** – it also applies to glazing units

V. DECLARATION OF PERFORMANCE

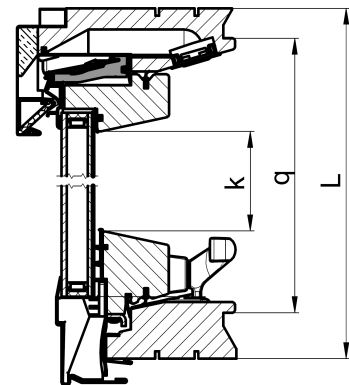
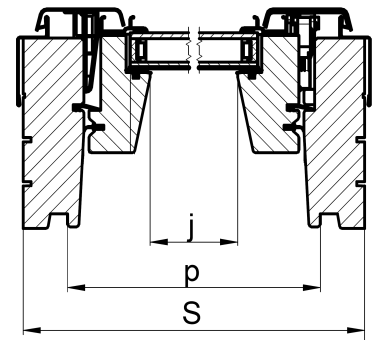
| | |
|--------------------------------------|---|
| Harmonized standard | EN 14351-1:2006+A2:2016 |
| Number of Declaration of Performance | XXX/CPR/14351/xx Individual numbers of Declaration of Performance are to be found in the table with technical parameters |

VI. TECHNICAL PARAMETERS

| Technical parameters | Glazing unit type | standards |
|---|-------------------|----------------------------------|
| | U2 | |
| - Window heat transmittance coefficient U_w [W/m ² K] | 1,3 | EN 12567-2, EN 10077 |
| - Glazing heat transmittance coefficient U_g [W/m ² K] | 1,1 | EN 673 |
| - Acoustic performance R_w [dB] | 32 (-1;-5) | EN ISO 717-1 |
| - max. capacity of air inlet [m ³ /h] - 10Pa | To 31 | EN 13141 |
| - air permeability class | 3 | EN 1026, EN 12207 |
| - light permeability τ_v | 0,76 | EN 410 |
| - solar factor [g] | 0,53 | EN 410 |
| - permeability UV | 0,26 | EN 410 |
| - frame thermal insulation U_f [W/m ² K] | npd | EN ISO 10077-1 EN ISO 10077-2 |
| - thermal insulation of window frame connection with glazing [W/mK] | npd | EN ISO 10077-1 EN ISO 10077-2 |
| Number of Declaration of Performance | A30/CPR/14351/xx | EN 14351-1:2006+A2:2016 |

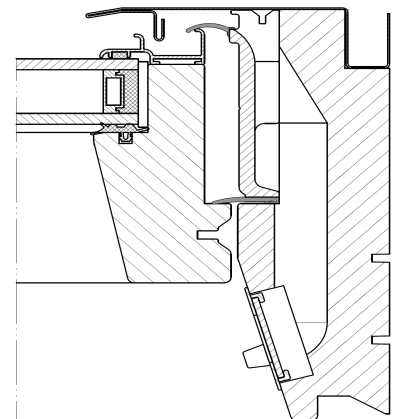
VII. DETAILED DIMENSIONS OF FTS, FTS-V WINDOWS

| Window size | Size symbol | Frame external size | | Distance between lining grooves | | Glazing area | | Glazing visible area |
|-------------|-------------|---------------------|--------|---------------------------------|------|--------------|------|----------------------|
| | | S | x L | p | q | j | k | j * k |
| [cm] | | [mm] | | | | | | [m ²] |
| 46 x 78 | 46 | 457 | x 781 | 395 | 724 | 279 | 591 | 0.16 |
| 46 x 98 | 48 | 457 | x 981 | 395 | 924 | 279 | 791 | 0.22 |
| 48 x 78 | 47 | 477 | x 781 | 415 | 724 | 299 | 591 | 0.18 |
| 48 x 98 | 49 | 477 | x 981 | 415 | 924 | 299 | 791 | 0.24 |
| 55 x 60 | 31 | 547 | x 601 | 485 | 544 | 369 | 411 | 0.15 |
| 55 x 78 | 01 | 547 | x 781 | 485 | 724 | 369 | 591 | 0.22 |
| 55 x 98 | 02 | 547 | x 981 | 485 | 924 | 369 | 791 | 0.29 |
| 55 x 118 | 16 | 547 | x 1181 | 485 | 1124 | 369 | 991 | 0.37 |
| 66 x 60 | 32 | 657 | x 601 | 595 | 544 | 479 | 411 | 0.20 |
| 66 x 78 | 22 | 657 | x 781 | 595 | 724 | 479 | 591 | 0.28 |
| 66 x 98 | 03 | 657 | x 981 | 595 | 924 | 479 | 791 | 0.38 |
| 66 x 118 | 04 | 657 | x 1181 | 595 | 1124 | 479 | 991 | 0.47 |
| 66 x 140 | 14 | 657 | x 1401 | 595 | 1344 | 479 | 1211 | 0.58 |
| 78 x 60 | 33 | 777 | x 601 | 715 | 544 | 599 | 411 | 0.25 |
| 78 x 78 | 23 | 777 | x 781 | 715 | 724 | 599 | 591 | 0.35 |
| 78 x 98 | 05 | 777 | x 981 | 715 | 924 | 599 | 791 | 0.47 |
| 78 x 118 | 06 | 777 | x 1181 | 715 | 1124 | 599 | 991 | 0.59 |
| 78 x 140 | 07 | 777 | x 1401 | 715 | 1344 | 599 | 1211 | 0.73 |
| 78 x 160 | 13 | 777 | x 1601 | 715 | 1544 | 599 | 1411 | 0.85 |
| 94 x 60 | 34 | 937 | x 601 | 875 | 544 | 759 | 411 | 0.31 |
| 94 x 78 | 24 | 937 | x 781 | 875 | 724 | 759 | 591 | 0.45 |
| 94 x 98 | 15 | 937 | x 981 | 875 | 924 | 759 | 791 | 0.60 |
| 94 x 118 | 08 | 937 | x 1181 | 875 | 1124 | 759 | 991 | 0.75 |
| 94 x 140 | 09 | 937 | x 1401 | 875 | 1344 | 759 | 1211 | 0.92 |
| 94 x 160 | 80 | 937 | x 1601 | 875 | 1544 | 759 | 1411 | 1.07 |
| 114 x 60 | 35 | 1137 | x 601 | 1075 | 544 | 959 | 411 | 0.39 |
| 114 x 78 | 25 | 1137 | x 781 | 1075 | 724 | 959 | 591 | 0.57 |
| 114 x 118 | 10 | 1137 | x 1181 | 1075 | 1124 | 959 | 991 | 0.95 |
| 114 x 140 | 11 | 1137 | x 1401 | 1075 | 1344 | 959 | 1211 | 1.16 |
| 134 x 60 | 36 | 1337 | x 601 | 1275 | 544 | 1159 | 411 | 0.48 |
| 134 x 78 | 26 | 1337 | x 781 | 1275 | 724 | 1159 | 591 | 0.68 |
| 134 x 98 | 12 | 1337 | x 981 | 1275 | 924 | 1159 | 791 | 0.92 |
| 134 x 118 | 18 | 1337 | x 1181 | 1275 | 1124 | 1159 | 991 | 1.15 |
| 134 x 140 | 17 | 1337 | x 1401 | 1275 | 1344 | 1159 | 1211 | 1.40 |



VIII. CAPACITY OF V10 AIR INLET

| | | Window width [cm] | | | | | |
|-------------------------------------|---------------------|-------------------|-------|-------|-------|--------|--------|
| | | 55/.. | 66/.. | 78/.. | 94/.. | 114/.. | 134/.. |
| Geometric area * [mm ²] | | 1,945 | 1,945 | 1,945 | 1,945 | 1,945 | 1,945 |
| Pressure difference [Pa] | | | | | | | |
| 1 | [m ³ /h] | 2,0 | | | | | |
| | [l/s] | 0.55 | | | | | |
| 2 | [m ³ /h] | 4,0 | | | | | |
| | [l/s] | 0.98 | | | | | |
| 10 | [m ³ /h] | 9 | | | | | |
| | [l/s] | 2.41 | | | | | |
| 20 | [m ³ /h] | 9 | | | | | |
| | [l/s] | 3.46 | | | | | |



* the smallest cross-section area of the air inlet channel